



IntelComp project: *Living Lab approach to IntelComp*

Dietmar Lampert, ZSI – Centre for Social Innovation, Vienna, Austria

October 24, 2022

Kick-off Event of the Artificial Intelligence Living Lab



Topics covered by this brief intervention

- What is a Living Lab (LL) – in our understanding
- Why a Living Lab approach
- Key elements and principles of our LL
- Challenges ahead & strengths we have

What is a Living Lab (LL) – in our understanding

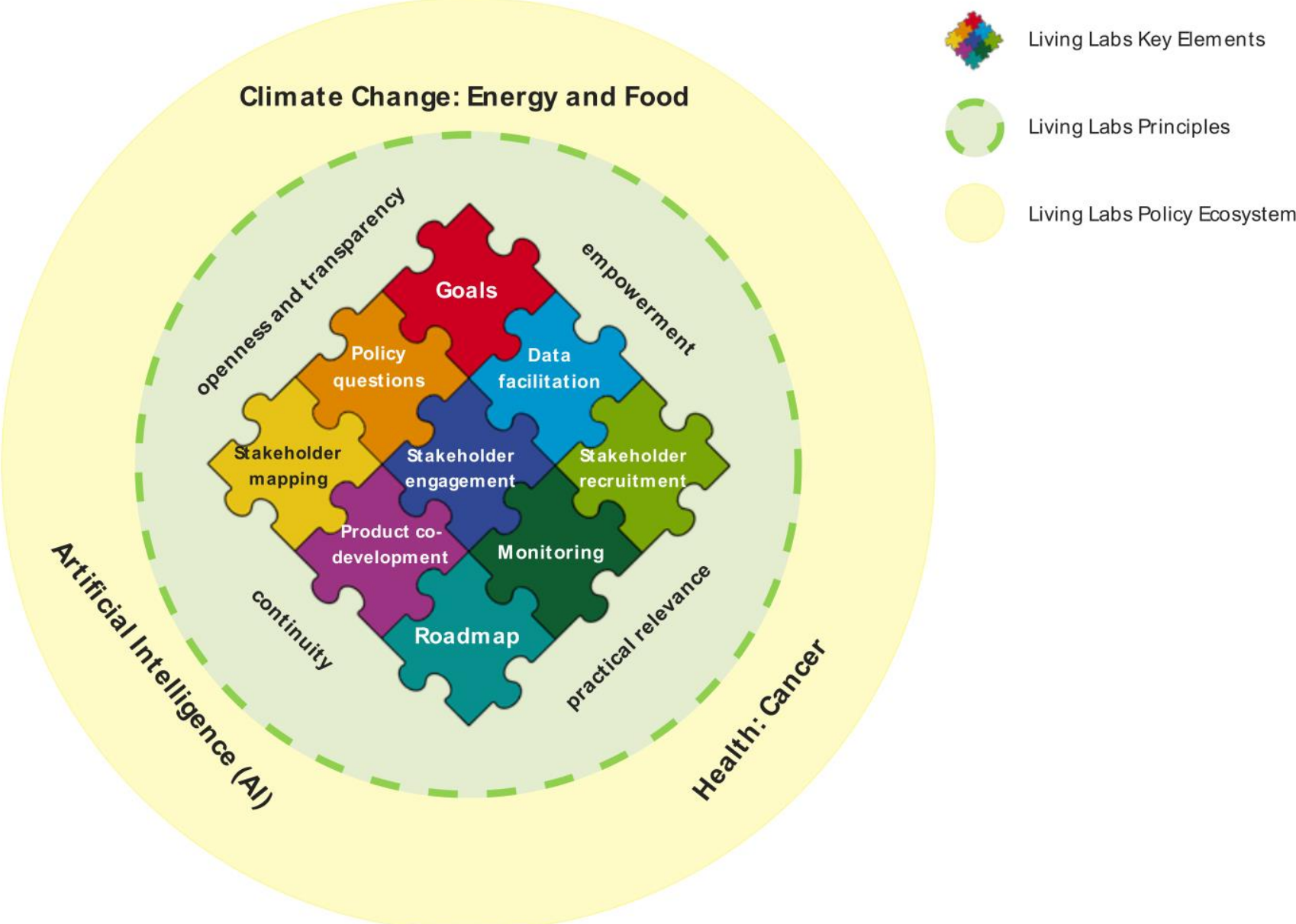
- Many different types of definitions
- No single approach
- IntelComp's work definition:

A living lab provides a setting for collaborative innovation by offering a collaborative platform for research, development, and experimentation with product and service innovations in real-life contexts, based on specific methodologies and tools, and implemented through concrete innovation projects and community-building activities.

Why a Living Lab approach

	STI Viewer	STI Policy Participation Portal	Evaluation Workbench
Targeted Organisation	Public administration (Ministry), funding agency	Ministry, funding agency, academic, business and citizen organisations	Funding Agency, Evaluation Agency (if independent of the Funding Agency)
Targeted users	Policy & STI analyst	Policy officer, STI managers/agents for organisations, citizens	Call Manager
Main functionality	Analyse, compare and visualise a comprehensive set of STI related KPIs	To provide a synthetic list of measurements for participatory STI policy making	To assist in the ex-ante evaluation of STI proposals for funding
Stage of the policy-making cycle	Agenda setting, monitoring and ex post evaluation	Agenda setting, monitoring and ex post evaluation	Implementation

Key components and principles of the IntelComp Living Labs



Key components and principles of the IntelComp Living Labs



- Each LL starts with its own set of domain-specific policy questions.
- Large set of questions already collected, which informs the work of the technical teams, from data sources to AI services to the user interfaces of the IntelComp tools.
- During the LL implementation, the initial set of policy questions will be validated, expanded, and refined, depending on the needs and interests of the engaged stakeholders.

Key components and principles of the IntelComp Living Labs



- Depending on and derived from the policy questions and indicators or measurements are the data that ought to be used, processed, and presented via the user tools.
- Additional possibility: users may be given the means to upload their own data and possibly have them enriched and processed, to eventually use them in the given user tool.
- Caveat: several restrictions and precondition in place that need to be explored within the LL.

Key components and principles of the IntelComp Living Labs



- Co-creation is in IntelComp's DNA and therefore one of the key elements of the LL: the co-development of the project's tools
- The development of the tools follow the same co-creation approach
- the LL participants and potential users of the tools will have a big say in the development of those tools

Challenges ahead & strengths we build on

- Challenges:
 - Identify needs of different stakeholders while development is unfolding.
 - Finding a balance between LL activities and participants possibility to engage.
 - Triangulate LL participants needs, thematic peculiarities, and development process.
- Strengths:
 - Proven track record of project partners, both on development and stakeholder engagement side
 - Build on existing work
 - Solid technical development plan and LL setup created to ensure an exciting and fruitful engagement



Contact:

Dietmar Lampert [lampert_AT_zsi.at]

<https://intelcomp.eu>

@IntelComp_2020



This project has received funding from the European Union's Horizon 2020 research and innovation programme under grant agreement No. 101004870. H2020-SC6-GOVERNANCE-2018-2019-2020 / H2020-SC6-GOVERNANCE-2020