



MedDRA Web-Based Browser

Medical Dictionary for Regulatory Activities

MedDRA Browser

Preferred Language English [MedDRA Concept Descriptions](#) [Legends](#) [About](#) [Search History](#) [New Browser Window](#) [MedDRA Documentation](#) [User Guide](#) [SMQ Analysis](#) [Hierarchy Analysis](#) [Logout](#)

Language and Version Options English Spanish English 22.1

Browser View SOC

Release/Supplemental View Release [Restore Defaults](#)

Display Options Show Codes Show Non-Current LLTs

Term

- SOC**
- SOC** Blood and lymphatic system disorders
Trastornos de la sangre y del sistema linfático
- SOC** Cardiac disorders
Trastornos cardiacos
- SOC** Congenital, familial and genetic disorders
Trastornos congénitos, familiares y genéticos
- SOC** Ear and labyrinth disorders
Trastornos del oído y del laberinto
- SOC** Endocrine disorders
Trastornos endocrinos
- SOC** Eye disorders
Trastornos oculares
- SOC** Gastrointestinal disorders
Trastornos gastrointestinales
- SOC** General disorders and administration site conditions
Trastornos generales y alteraciones en el lugar de administración
- SOC** Hepatobiliary disorders
Trastornos hepatobiliares
- SOC** Immune system disorders

Search Options

SOC HLGT HLT PT LLT

English NEUTROPHIL COUNT DECREASED

[Use Synonym List](#)

Ignore Diacritical Marks

Show PT/LLT with categories

[Search](#) [Clear Search](#) [Cancel](#) [Advanced Search](#)

[|<](#) [<](#) [>](#) [>|](#) [Export](#)

Total Search Results: 11

Details: PT (3) LLT (8)

Select SOC(s) to Search (default is all SOC(s))

- Blood and lymphatic system disorders
- Cardiac disorders
- Congenital, familial and genetic disorders
- Ear and labyrinth disorders
- Endocrine disorders
- Eye disorders
- Gastrointestinal disorders
- General disorders and administration site conditions
- Hepatobiliary disorders
- Immune system disorders

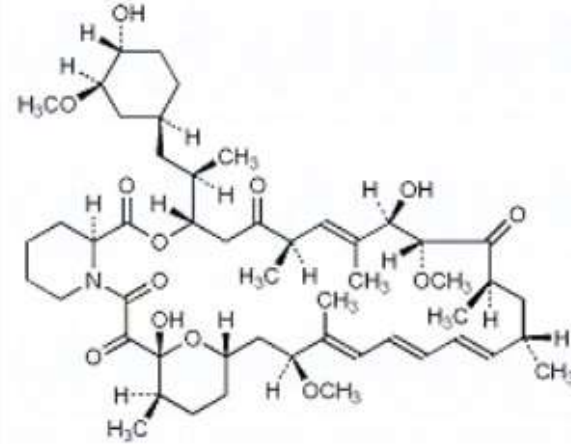
[Clear Selection](#)

Search Results

PT **LLT**

- PT**
- Exact Match - 1**
 - PT** Neutrophil count decreased
Recuento de neutrófilos disminuido
- Lexical Variant - 0**
- Synonym Search Results - 0**
- Contains Search Results - 2**
 - PT** Band neutrophil count decreased
Recuento de cayados disminuido
 - PT** CSF neutrophil count decreased
Recuento de neutrófilos en LCR disminuido

sirolimus



Latin sirolimusum

French sirolimus

Spanish sirólimus

Russian сиролимус

Arabic سىروليموس

Chinese 西罗莫司

Phonetic sirolimus

Molecular formula C₅₁H₇₉NO₁₃

ATC Codes L04AA10

S01XA23



STANDARD TERMS

NEWS AND INFORMATION ▾

BROWSE ▾

SEARCH ▾

WELCOME LORENZO ▾

Current	Powder for implantation matrix	ST	Human and Veterinary
Current	Powder for implantation paste	ST	Human and Veterinary
Current	Powder for implantation suspension	ST	Human and Veterinary
Current	Powder for intravesical solution/solution for injection	ST	Human and Veterinary
Rejected	Powder for nebuliser solution/solution for injection/infusion	ST	Human and Veterinary
Current	Powder for prolonged-release suspension for injection	ST	Human and Veterinary
Current	Powder for solution for infusion	ST	Human and Veterinary

DETAILS

CHARACTERISTICS

TRANSLATIONS

LINKED TERMS

SUMMARY SHEETS

English	Powder for solution for infusion	2016-03-30	2 ■
French	Poudre pour solution pour perfusion	2006-03-14	1 ■
Italian	Polvere per soluzione per infusione	2006-03-14	1 ■
Spanish	Polvo para solución para perfusión	2006-03-14	1 ■

Term Recognition

neutropenia MedDRA - PTs

neutropenia

neutrophil count decreased MedDRA - PTs

recuento de neutrófilos disminuido

neutrophil count MedDRA - PTs

recuento de neutrófilos

leukopenia MedDRA - PTs

leucopenia

Term Recognition Termbase Search

Editor

645 nearly all of the events reported with highest incidence were reported more often in the than in the control arm.

646 Among these most frequently reported events, the PTs for which the largest differences between arms were observed were generally myelosuppressive in nature (specifically, neutropenia / neutrophil count decreased, anemia, and leukopenia).

647 In addition, modest differences were observed between arms (with higher incidence in the arm) for some gastrointestinal disorders, most notably nausea, vomiting, diarrhoea, and fatigue.

EN EL ESTUDIO mayor incidencia en la rama de

Entre estos A. frecuencia, lo mayores diferencias general son lo saber: neutropenia / neutrófilos disminuido (leucopenia).

Además, se observaron diferencias moderadas en la incidencia en los trastornos gastrointestinales (náuseas, vómitos, diarrea y fatiga).